



**TEAM SPORTS**

**SP21**

**TRACK & FIELD**

**EURO VERSION**

ZELUS Sport Ltd. | Authorized Licensee of NIKE, Inc.

**MEN'S**  
**TRACK & FIELD SP21**



# MEN'S TRACK & FIELD

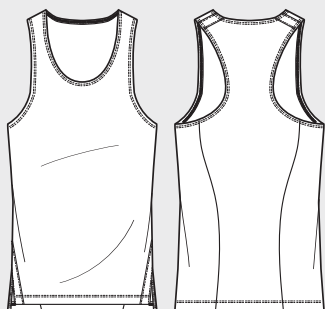
The Nike Stock Dry Miler Singlet delivers ultimate performance for the athlete. Dri-FIT lightweight material. Contrast shoulder tape design aesthetic for elevated race day look. Split, dropped-back hem for improved mobility and coverage.

## MEN'S NIKE STOCK DRY MILER SINGLET

- Side vents let you move freely.
- Dropped back hem helps keep you covered as you move.
- Fabric: 100% polyester.

### **M** MEN'S SIZES AVAILABLE

- MEN'S SIZES: S, M, L, XL, 2XL, 3XL,



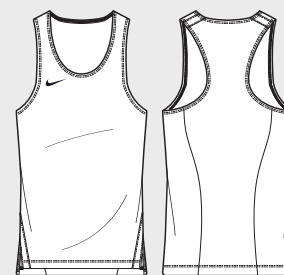
LIFE-CYCLE: 01 JANUARY 2021 - 31 DECEMBER 2023

MENS WSP - €14.63 / MENS SRP - €30.00



010 - BLACK / WHITE

**M** NT0300-010



100 - WHITE / BLACK

**M** NT0300-100



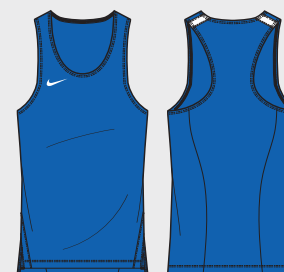
302 - PINE GREEN / WHITE

**M** NT0300-302



451 - OBSIDIAN / WHITE

**M** NT0300-451



463 - ROYAL BLUE / WHITE

**M** NT0300-463



657 - UNIVERSITY RED / WHITE

**M** NT0300-657



# MEN'S TRACK & FIELD

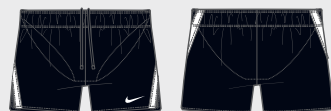
Dri-FIT lightweight woven short with side panel tape always colour blocked to white. Designed for use of the recreational runner to the elite athlete, for training or competition.

## MEN'S NIKE STOCK FAST 2 INCH SHORT

- Standard fit for a relaxed, easy feel and personalized fit.
- Inseam length: 2" / 5cm (all sizes).
- Split hem offers optimal mobility.
- Inner Brief.
- Fabric: 100% polyester.

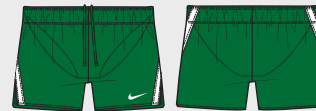
LIFE-CYCLE: 01 JANUARY 2021 - 31 DECEMBER 2023

MENS WSP - €12.20 / MENS SRP - €25.00



010 - BLACK / WHITE

**M** NT0303-010



302 - PINE GREEN / WHITE

**M** NT0303-302

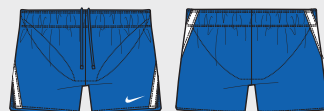


451 - OBSIDIAN / WHITE

**M** NT0303-451

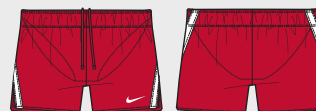
## **M** MEN'S SIZES AVAILABLE

- MEN'S SIZES: S, M, L, XL, 2XL, 3XL,



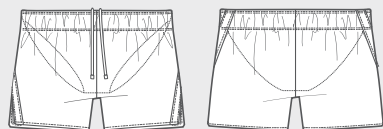
463 - ROYAL BLUE / WHITE

**M** NT0303-463



657 - UNIVERSITY RED / WHITE

**M** NT0303-657





# MEN'S TRACK & FIELD

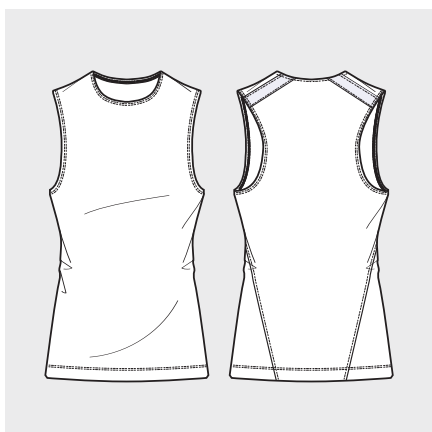
Dri-FIT performance top that wicks sweat for dry/cool comfort. Fitted body led design, all seams placed to allow athletes to move freely with zero distraction. Contrast self fabric power speed inset design aesthetic for elevated race day look. Designed for use of the recreational runner to the elite athlete, for training or competition.

## MEN'S NIKE STOCK MUSCLE TANK

- Nike fabric provides stretch and support.
- Sweat Wicking Technology.
- Fabric: 92% polyester 8% elastane.

### **M** MEN'S SIZES AVAILABLE

- MEN'S SIZES: S, M, L, XL, 2XL, 3XL,



LIFE-CYCLE: 01 JANUARY 2021 - 31 DECEMBER 2023

MENS WSP - €17.07 / MENS SRP - €35.00



010 - BLACK / WHITE

**M** NT0306-010



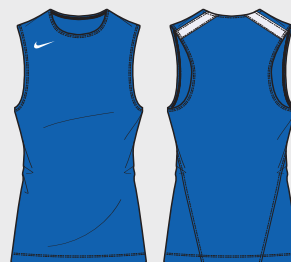
302 - PINE GREEN / WHITE

**M** NT0306-302



451 - OBSIDIAN / WHITE

**M** NT0306-451



463 - ROYAL BLUE / WHITE

**M** NT0306-463



657 - UNIVERSITY RED / WHITE

**M** NT0306-657



# MEN'S TRACK & FIELD

Dri-FIT half tight that wicks sweat for dry/cool comfort. Body led design, all seams placed to allow the athlete to move freely with zero distraction. Designed for use of the recreational runner to the elite athlete for training or competition.

## MEN'S NIKE STOCK HALF TIGHT

- Nike fabric provides stretch and support.
- Inseam length: 7" / 18cm (all sizes).
- Flat, elastic waistband with drawcord.
- Fabric: 89% polyester 11% elastane.

LIFE-CYCLE: 01 JANUARY 2021 - 31 DECEMBER 2023  
MENS WSP - €17.07 / MENS SRP - €35.00



010 - BLACK / WHITE

**M** NT0307-010



302 - PINE GREEN / WHITE

**M** NT0307-302



451 - OBSIDIAN / WHITE

**M** NT0307-451

### **M** MEN'S SIZES AVAILABLE

- MEN'S SIZES: S, M, L, XL, 2XL, 3XL,



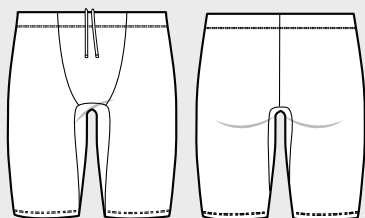
463 - ROYAL BLUE / WHITE

**M** NT0307-463



657 - UNIVERSITY RED / WHITE

**M** NT0307-657





# MEN'S TRACK & FIELD

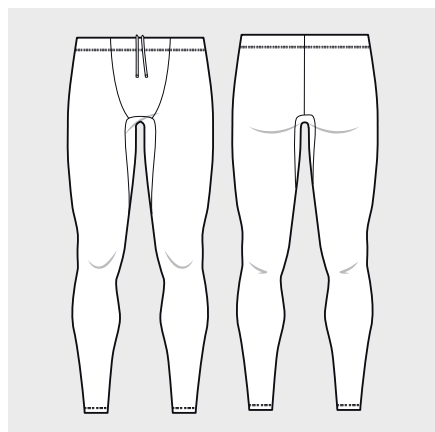
Dri-FIT full length tight that wicks sweat for dry/cool comfort. Body led design, all seams placed to allow the athlete to move freely with zero distraction. Designed for use of the recreational runner to the elite athlete for training or competition.

## MEN'S NIKE STOCK FULL LENGTH TIGHT

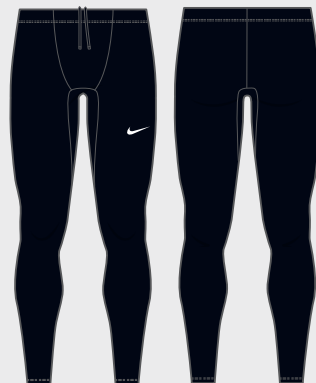
- Nike fabric provides stretch and support.
- Flat, elastic waistband with drawcord.
- Fabric: 89% polyester 11% elastane.

### M MEN'S SIZES AVAILABLE

- MEN'S SIZES: S, M, L, XL, 2XL, 3XL,

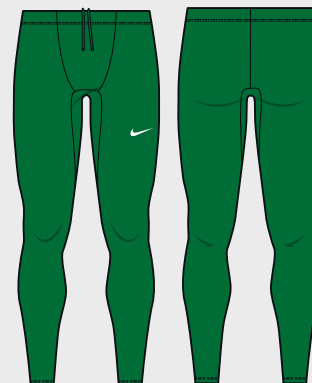


LIFE-CYCLE: 01 JANUARY 2021 - 31 DECEMBER 2023  
MENS WSP - €27.50 / MENS SRP - €55.00



010 - BLACK / WHITE

M NT0313-010



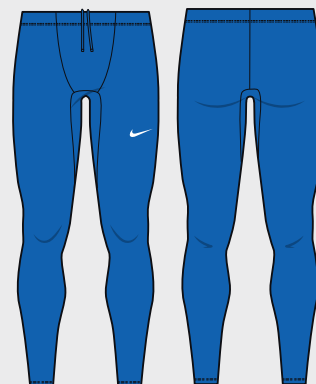
302 - PINE GREEN / WHITE

M NT0313-302



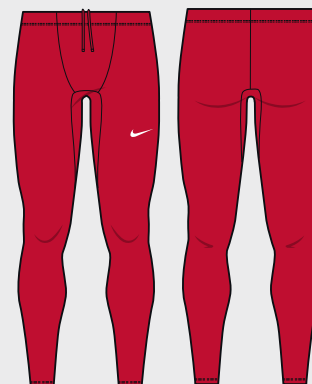
451 - OBSIDIAN / WHITE

M NT0313-451



463 - ROYAL BLUE / WHITE

M NT0313-463



657 - UNIVERSITY RED / WHITE

M NT0313-657



# MEN'S TRACK & FIELD

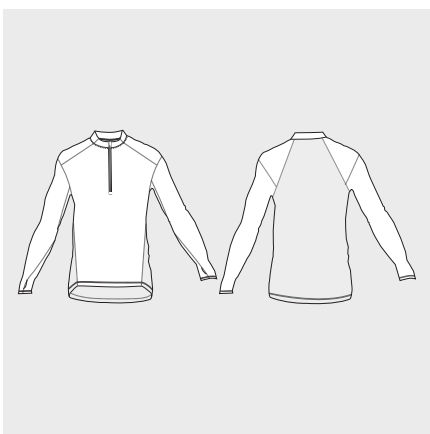
Franchise Dri-FIT half zip that the consumer loves but more breathability with new back mesh. Drop shoulder sleeve for an updated modern look. Improved collar with facing for stability. Dropped back hemline for coverage with overall relaxed body fit. Thumbhole construction ensures arm is not exposed when not using the thumbhole.

## MEN'S NIKE DRY ELEMENT TOP HALF ZIP

- Mesh back for breathability.
- Dropped back hem helps keep you covered as you move.
- Fabric: 88% polyester/12% spandex.

### **M** MEN'S SIZES AVAILABLE

- MEN'S SIZES: S, M, L, XL, 2XL, 3XL,



LIFE-CYCLE: 01 JANUARY 2021 - 31 DECEMBER 2023

MENS WSP - €29.26 / MENS SRP - €60.00



010 - BLACK / WHITE

**M** NT0315-010



012 - WOLF GREY / HEATHER / BLACK

**M** NT0315-012



060 - ANTRACITE / WHITE

**M** NT0315-060



302 - PINE GREEN / WHITE

**M** NT0315-302



451 - OBSIDIAN / WHITE

**M** NT0315-451



463 - ROYAL BLUE / WHITE

**M** NT0315-463



657 - UNIVERSITY RED / WHITE

**M** NT0315-657





# MEN'S TRACK & FIELD

Dri-FIT material. Design updates maintaining athlete favorite details and fit with taper leg. Brand new silhouette in the element material that the athlete loves. Zippered side pockets.

## MEN'S NIKE DRY ELEMENT PANT

- Dri-FIT material.
- Zippered side pockets.
- Fabric: 88% polyester/12% spandex.

**M** MEN'S SIZES AVAILABLE

- MEN'S SIZES: S, M, L, XL, 2XL, 3XL,



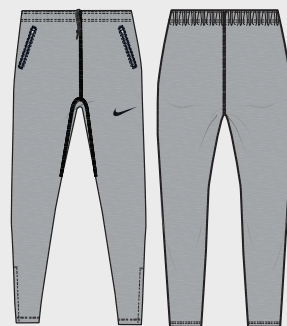
LIFE-CYCLE: 01 JANUARY 2021 - 31 DECEMBER 2023

MENS WSP - €34.15 / MENS SRP - €70.00



010 - BLACK / WHITE

**M** NT0317-010



012 - WOLF GREY / HEATHER / BLACK

**M** NT0317-012



060 - ANTRACITE / WHITE

**M** NT0317-060



302 - PINE GREEN / WHITE

**M** NT0317-302



451 - OBSIDIAN / WHITE

**M** NT0317-451



463 - ROYAL BLUE / WHITE

**M** NT0317-463



657 - UNIVERSITY RED / WHITE

**M** NT0317-657



# MEN'S TRACK & FIELD

The Nike Woven Jacket is built to withstand the elements with weather-resistant fabric. Nike HyperShield fabric blocks elements in the harshest weather. Its hooded design includes a built-in visor so you can stay focused on your run. Reflective tape along seams. Zippered pockets. Zippered pockets.

## MEN'S NIKE WOVEN JACKET

- Weather-resistant fabric.
- Hooded design.
- Reflective tape.
- Zippered pockets.
- Fabric: Body: 100% nylon.
- Pockets: 100% polyester.

LIFE-CYCLE: 01 JANUARY 2021 - 31 DECEMBER 2023

MENS WSP - €60.98 / MENS SRP - €125.00



010 - BLACK / WHITE

**M** NT0319-010



060 - ANTHRACITE / WHITE

**M** NT0319-60



302 - PINE GREEN / WHITE

**M** NT0319-302



451 - OBSIDIAN / WHITE

**M** NT0319-451



657 - UNIVERSITY RED / WHITE

**M** NT0319-657

## **M** MEN'S SIZES AVAILABLE

- MEN'S SIZES: S, M, L, XL, 2XL, 3XL,





# MEN'S TRACK & FIELD

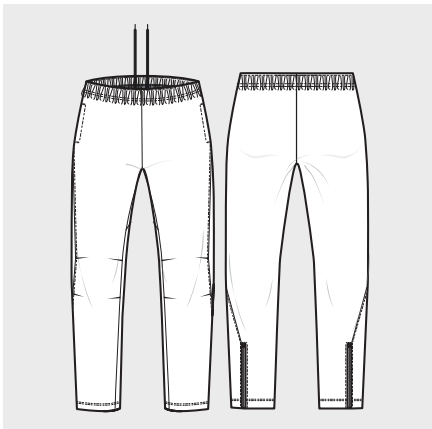
The Nike Woven Pants are built to withstand the elements with weather-resistant fabric. Nike HyperShield fabric blocks elements in the harshest weather. Its elastic waistband and zippered hem offer customizable comfort for your run. Reflective tape along seams. Zippered pockets

## MEN'S NIKE WOVEN PANT

- Weather-resistant fabric.
- Zipped hem.
- Reflective tape.
- Zippered pockets.
- Fabric: 100% nylon.

### **M** MEN'S SIZES AVAILABLE

- MEN'S SIZES: S, M, L, XL, 2XL, 3XL,



**WOMEN'S**  
**TRACK & FIELD SP21**



# WOMEN'S TRACK & FIELD

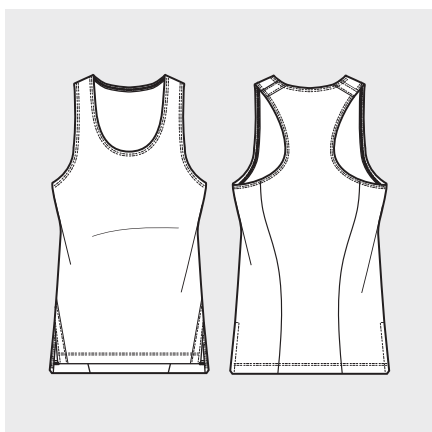
The Nike Stock Dry Miler Singlet delivers ultimate performance for the athlete. Dri-FIT lightweight material. Contrast shoulder tape design aesthetic for elevated race day look. Split, dropped-back hem for improved mobility and coverage.

## WOMEN'S NIKE STOCK DRY MILER SINGLET

- Side vents let you move freely.
- Dropped back hem helps keep you covered as you move.
- Fabric: 100% polyester.

**W** WOMEN'S SIZES AVAILABLE

- WOMEN'S SIZES: XS, S, M, L, XL, 2XL



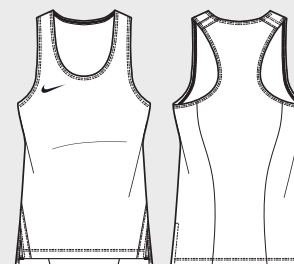
LIFE-CYCLE: 01 JANUARY 2021 - 31 DECEMBER 2023

WOMENS WSP - €14.63 / WOMENS SRP - €30.00



010 - BLACK / WHITE

**W** NT0301-010



100 - WHITE / BLACK

**W** NT0301-100



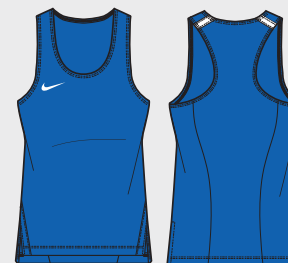
302 - PINE GREEN / WHITE

**W** NT0301-302



451 - OBSIDIAN / WHITE

**W** NT0301-451



463 - ROYAL BLUE / WHITE

**W** NT0301-463



657 - UNIVERSITY RED / WHITE

**W** NT0301-657



# WOMEN'S TRACK & FIELD

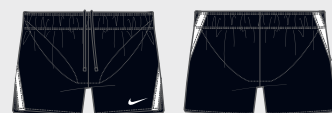
Dri-FIT lightweight woven short with side panel tape always colour blocked to white. Designed for use of the recreational runner to the elite athlete, for training or competition.

## WOMEN'S NIKE STOCK FAST 2 INCH SHORT

- Standard fit for a relaxed, easy feel and personalized fit.
- Inseam length: 2" / 5cm (all sizes).
- Split hem offers optimal mobility.
- Inner Brief.
- Fabric: 100% polyester.

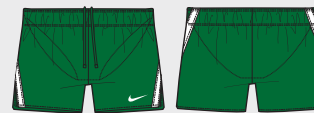
LIFE-CYCLE: 01 JANUARY 2021 - 31 DECEMBER 2023

WOMENS WSP - €12.20 / WOMENS SRP - €25.00



010 - BLACK / WHITE

**W** NT0304-010



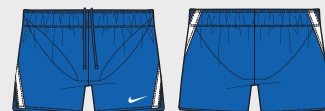
302 - PINE GREEN / WHITE

**W** NT0304-302



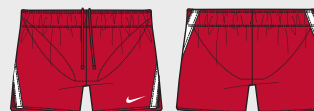
451 - OBSIDIAN / WHITE

**W** NT0304-451



463 - ROYAL BLUE / WHITE

**W** NT0304-463

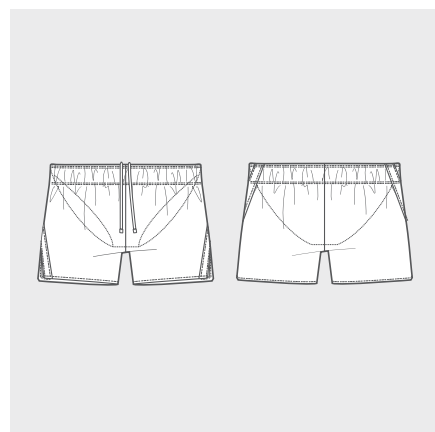


657 - UNIVERSITY RED / WHITE

**W** NT0304-657

**W** WOMEN'S SIZES AVAILABLE

- WOMEN'S SIZES: XS, S, M, L, XL, 2XL





# WOMEN'S TRACK & FIELD

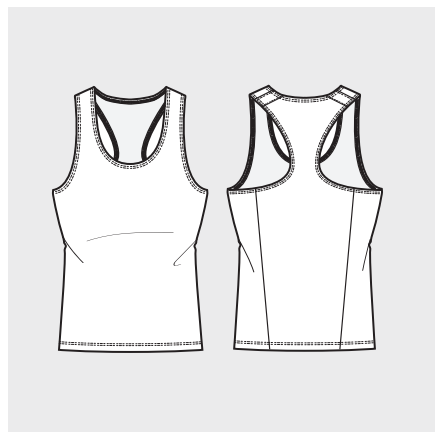
Dri-FIT performance top that wicks sweat for dry/cool comfort. Fitted body led design, all seams placed to allow the athlete to move freely with zero distraction. Built in bra for additional support. Contrast self fabric power speed inset design aesthetic for elevated race day look. Designed for use of the recreational runner to the elite athlete, for training or competition.

## WOMEN'S NIKE TEAM STOCK AIRBORNE TOP

- Nike fabric provides stretch and support.
- Sweat Wicking Technology.
- Fabric: 92% polyester 8% elastane.

**W** WOMEN'S SIZES AVAILABLE

- WOMEN'S SIZES: XS, S, M, L, XL, 2XL



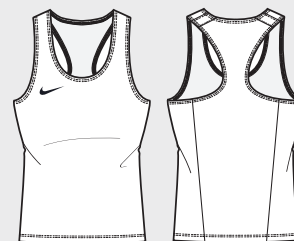
LIFE-CYCLE: 01 JANUARY 2021 - 31 DECEMBER 2023

WOMENS WSP - €22.50 / WOMENS SRP - €45.00



010 - BLACK / WHITE

**W** NT0308-010



100 - WHITE / BLACK

**W** NT0308-100



302 - PINE GREEN / WHITE

**W** NT0308-302



451 - OBSIDIAN / WHITE

**W** NT0308-451



463 - ROYAL BLUE / WHITE

**W** NT0308-463



657 - UNIVERSITY RED / WHITE

**W** NT0308-657



# WOMEN'S TRACK & FIELD

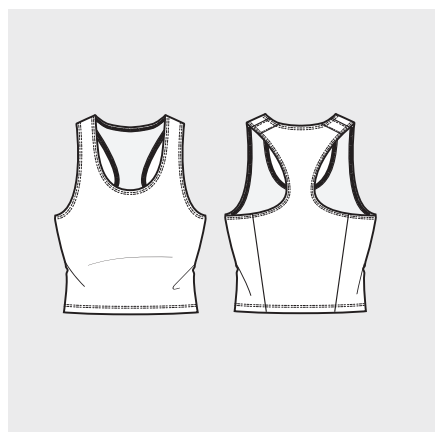
Dri-FIT performance top that wicks sweat for dry/cool comfort. Fitted body led design, all seams placed to allow the athlete to move freely with zero distraction. Built in bra for additional support. Contrast self fabric power speed inset design aesthetic for elevated race day look. Designed for use of the recreational runner to the elite athlete, for training or competition.

## WOMEN'S NIKE TEAM STOCK COVER TOP

- Nike fabric provides stretch and support.
- Sweat Wicking Technology.
- Fabric: 92% polyester 8% elastane.

**W** WOMEN'S SIZES AVAILABLE

- WOMEN'S SIZES: XS, S, M, L, XL, 2XL



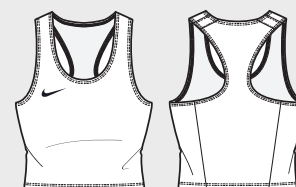
LIFE-CYCLE: 01 JANUARY 2021 - 31 DECEMBER 2023

WOMENS WSP - €22.50 / WOMENS SRP - €45.00



010 - BLACK / WHITE

**W** NT0312-010



100 - WHITE / BLACK

**W** NT0312-100



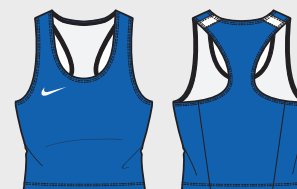
302 - PINE GREEN / WHITE

**W** NT0312-302



451 - OBSIDIAN / WHITE

**W** NT0312-451



463 - ROYAL BLUE / WHITE

**W** NT0312-463



657 - UNIVERSITY RED / WHITE

**W** NT0312-657





# WOMEN'S TRACK & FIELD

Dri-FIT brief that wicks sweat for dry/cool comfort. Body led design, all seams placed to allow the athlete to move freely with zero distraction. Designed for use of the recreational runner to the elite athlete, for training or competition.

## WOMEN'S NIKE STOCK BRIEF

- Nike fabric provides stretch and support.
- Flat, elastic waistband with drawcord.
- Fabric: 89% polyester 11% elastane.

LIFE-CYCLE: 01 JANUARY 2021 - 31 DECEMBER 2023

WOMENS WSP - €12.20 / WOMENS SRP - €25.00



010 - BLACK / WHITE

**W** NT0309-010



302 - PINE GREEN / WHITE

**W** NT0309-302



451 - OBSIDIAN / WHITE

**W** NT0309-451



463 - ROYAL BLUE / WHITE

**W** NT0309-463

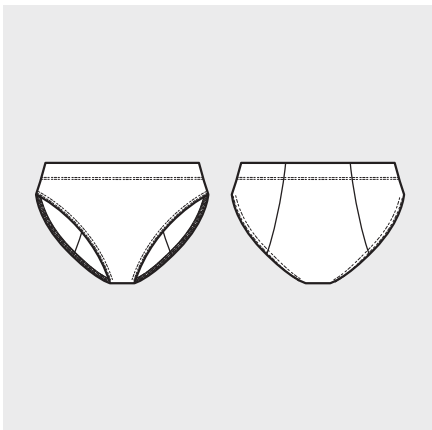


657 - UNIVERSITY RED / WHITE

**W** NT0309-657

**W** WOMEN'S SIZES AVAILABLE

- WOMEN'S SIZES: XS, S, M, L, XL, 2XL





# WOMEN'S TRACK & FIELD

Dri-FIT boy short that wicks sweat for dry/cool comfort. Body led design, all seams placed to allow the athlete to move freely with zero distraction. Designed for use of the recreational runner to the elite athlete, for training or competition.

## WOMEN'S NIKE STOCK BOY SHORT

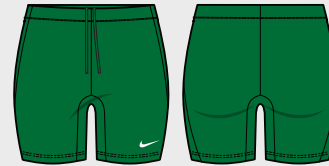
- Nike fabric provides stretch and support.
- Inseam length: 3" / 8cm (all sizes).
- Flat, elastic waistband with drawcord.
- Fabric: 89% polyester 11% elastane.

LIFE-CYCLE: 01 JANUARY 2021 - 31 DECEMBER 2023  
WOMENS WSP - €12.20 / WOMENS SRP - €25.00



010 - BLACK / WHITE

**W** NT0310-010



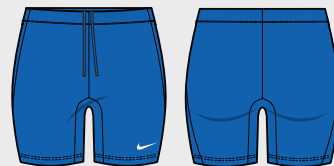
302 - PINE GREEN / WHITE

**W** NT0310-302



451 - OBSIDIAN / WHITE

**W** NT0310-451



463 - ROYAL BLUE / WHITE

**W** NT0310-463

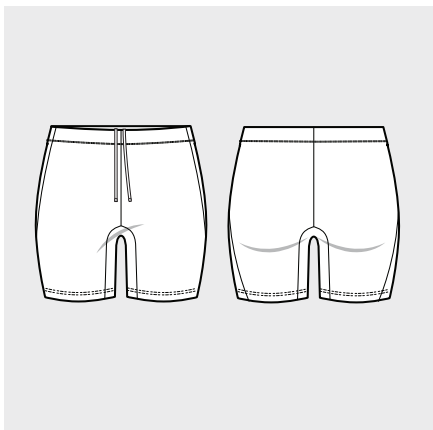


657 - UNIVERSITY RED / WHITE

**W** NT0310-657

**W** WOMEN'S SIZES AVAILABLE

- WOMEN'S SIZES: XS, S, M, L, XL, 2XL





# WOMEN'S TRACK & FIELD

Dri-FIT half tight that wicks sweat for dry/cool comfort. Body led design, all seams placed to allow the athlete to move freely with zero distraction. Designed for use of the recreational runner to the elite athlete, for training or competition.

## WOMEN'S NIKE STOCK HALF TIGHT

- Nike fabric provides stretch and support.
- Inseam length: 6.5" / 16.5cm (all sizes).
- Flat, elastic waistband with drawcord.
- Fabric: 89% polyester 11% elastane.

LIFE-CYCLE: 01 JANUARY 2021 - 31 DECEMBER 2023  
WOMENS WSP - €17.07 / WOMENS SRP - €35.00



010 - BLACK / WHITE

**W** NT0311-010



302 - PINE GREEN / WHITE

**W** NT0311-302



451 - OBSIDIAN / WHITE

**W** NT0311-451



463 - ROYAL BLUE / WHITE

**W** NT0311-463



657 - UNIVERSITY RED / WHITE

**W** NT0311-657

## **W** WOMEN'S SIZES AVAILABLE

- WOMEN'S SIZES: XS, S, M, L, XL, 2XL





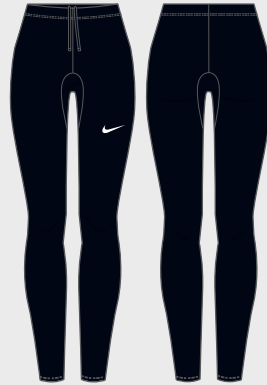
# WOMEN'S TRACK & FIELD

Dri-FIT full length tight that wicks sweat for dry/cool comfort. Body led design, all seams placed to allow the athlete to move freely with zero distraction. Designed for use of the recreational runner to the elite athlete, for training or competition.

## WOMEN'S NIKE TEAM STOCK FULL LENGTH TIGHT

- Nike fabric provides stretch and support.
- Flat, elastic waistband with drawcord.
- Fabric: 89% polyester 11% elastane.

LIFE-CYCLE: 01 JANUARY 2021 - 31 DECEMBER 2023  
WOMENS WSP - €27.50 / WOMENS SRP - €55.00



010 - BLACK / WHITE

**W** NT0314-010



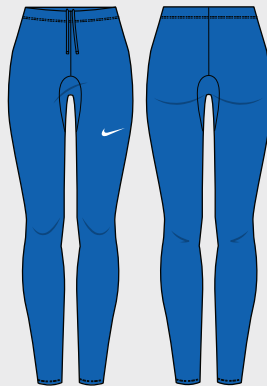
302 - PINE GREEN / WHITE

**W** NT0314-302



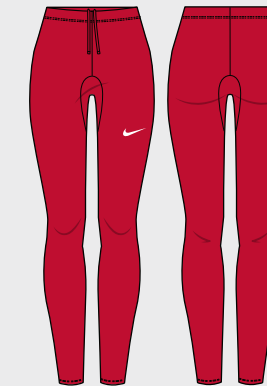
451 - OBSIDIAN / WHITE

**W** NT0314-451



463 - ROYAL BLUE / WHITE

**W** NT0314-463

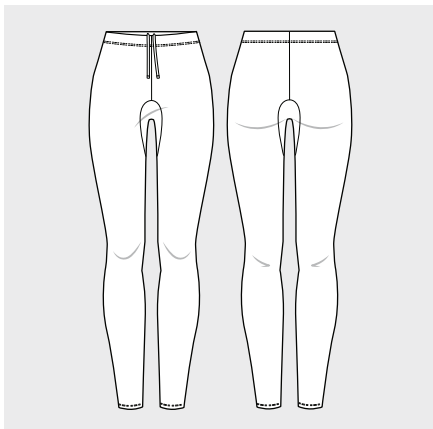


657 - UNIVERSITY RED / WHITE

**W** NT0314-657

**W** WOMEN'S SIZES AVAILABLE

- WOMEN'S SIZES: XS, S, M, L, XL, 2XL





# WOMEN'S TRACK & FIELD

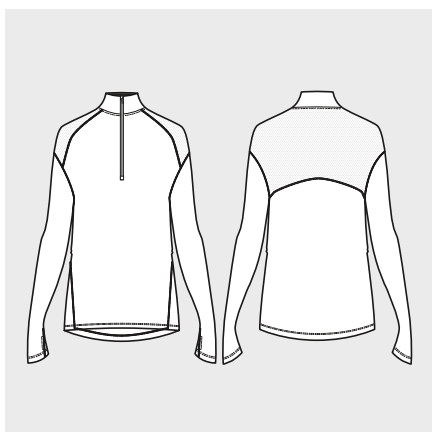
Franchise Dri-FIT half zip that the consumer loves but more breathability with new back mesh. Drop shoulder sleeve for an updated modern look. Improved collar with facing for stability. Dropped back hemline for coverage with overall relaxed body fit. Thumbhole construction ensures arm is not exposed when not using the thumbhole.

## WOMEN'S NIKE DRY ELEMENT TOP HALF ZIP

- Mesh back for breathability.
- Dropped back hem helps keep you covered as you move.
- Fabric: 88% polyester/12% spandex.

**W** WOMEN'S SIZES AVAILABLE

- WOMEN'S SIZES: XS, S, M, L, XL, 2XL



LIFE-CYCLE: 01 JANUARY 2021 - 31 DECEMBER 2023

WOMENS WSP - €29.27 / WOMENS SRP - €60.00



010 - BLACK / WHITE

**W** NT0316-010



012 - WOLF GREY / HEATHER / BLACK

**W** NT0316-012



060 - ANTRACITE / WHITE

**W** NT0316-060



302 - PINE GREEN / WHITE

**W** NT0316-302



451 - OBSIDIAN / WHITE

**W** NT0316-451



463 - ROYAL BLUE / WHITE

**W** NT0316-463



657 - UNIVERSITY RED / WHITE

**W** NT0316-657



# WOMEN'S TRACK & FIELD

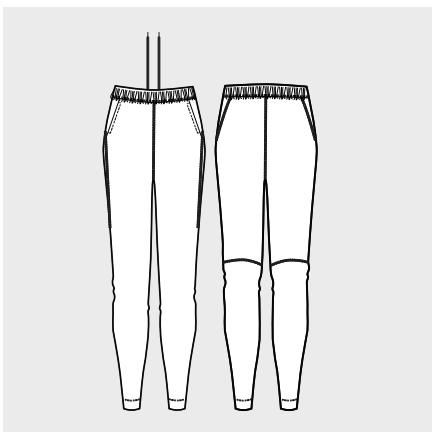
Dri-FIT material. Design updates maintaining athlete favorite details and fit with taper leg. Brand new silhouette in the element material that the athlete loves. Zippered side pockets.

## WOMEN'S NIKE DRY ELEMENT PANT

- Dri-FIT material.
- Zippered side pockets.
- Fabric: 88% polyester/12% spandex.

### **W** WOMEN'S SIZES AVAILABLE

- WOMEN'S SIZES: XS, S, M, L, XL, 2XL

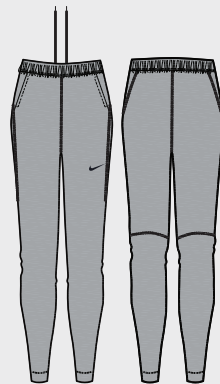


LIFE-CYCLE: 01 JANUARY 2021 - 31 DECEMBER 2023  
WOMENS WSP - €34.15 / WOMENS SRP - €70.00



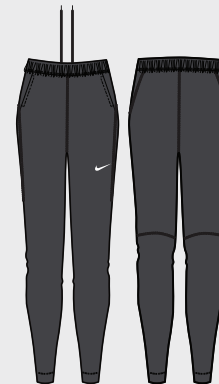
010 - BLACK / WHITE

**W** NT0317-010



012 - WOLF GREY / HEATHER / BLACK

**W** NT0317-012



060 - ANTRACITE / WHITE

**W** NT0317-060



302 - PINE GREEN / WHITE

**W** NT0317-302



451 - OBSIDIAN / WHITE

**W** NT0317-451



463 - ROYAL BLUE / WHITE

**W** NT0317-463



657 - UNIVERSITY RED / WHITE

**W** NT0317-657



# WOMEN'S TRACK & FIELD

The Nike Woven Jacket is built to withstand the elements with weather-resistant fabric. Nike HyperShield fabric blocks elements in the harshest weather. Its hooded design includes a built-in visor so you can stay focused on your run. Reflective tape along seams. Zippered pockets.

## WOMEN'S NIKE WOVEN JACKET

- Weather-resistant fabric.
- Hooded design.
- Reflective tape.
- Zippered pockets.
- Fabric: Body: 100% nylon.
- Pockets: 100% polyester.

**W** WOMEN'S SIZES AVAILABLE

- WOMEN'S SIZES: XS, S, M, L, XL, 2XL





# WOMEN'S TRACK & FIELD

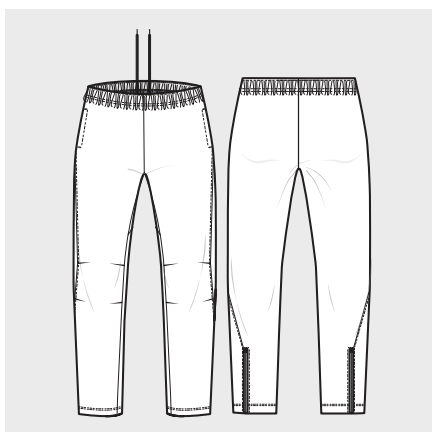
The Nike Woven Pants are built to withstand the elements with weather-resistant fabric. Nike HyperShield fabric blocks elements in the harshest weather. Its elastic waistband and zippered hem offer customizable comfort for your run. Reflective tape along seams. Zippered pockets

## WOMEN'S NIKE WOVEN PANT

- Weather-resistant fabric.
- Zipped hem.
- Reflective tape.
- Zippered pockets.
- Fabric: 100% nylon.

### **W** WOMEN'S SIZES AVAILABLE

- WOMEN'S SIZES: XS, S, M, L, XL, 2XL





# YOUTH

**TRACK & FIELD SP21**



# YOUTH TRACK & FIELD

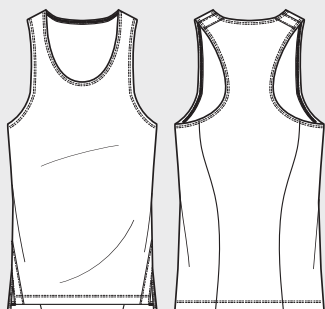
The Nike Stock Dry Miler Singlet delivers ultimate performance for the athlete. Dri-FIT lightweight material. Contrast shoulder tape design aesthetic for elevated race day look. Split, dropped-back hem for improved mobility and coverage.

## YOUTH NIKE STOCK DRY MILER SINGLET

- Side vents let you move freely.
- Dropped back hem helps keep you covered as you move.
- Fabric: 100% polyester.

**Y** YOUTH SIZES AVAILABLE

- YOUTH SIZES: XS, S, M, L, XL



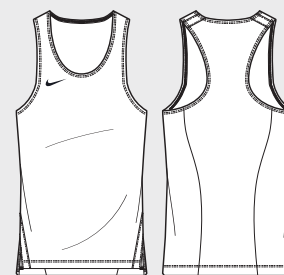
LIFE-CYCLE: 01 JANUARY 2021 - 31 DECEMBER 2023

YOUTH WSP - €12.20 / YOUTH SRP - €25.00



010 - BLACK / WHITE

**Y** NT0302-010



100 - WHITE / BLACK

**Y** NT0302-100



302 - PINE GREEN / WHITE

**Y** NT0302-302



451 - OBSIDIAN / WHITE

**Y** NT0302-451



463 - ROYAL BLUE / WHITE

**Y** NT0302-463



657 - UNIVERSITY RED / WHITE

**Y** NT0302-657



# MEN'S TRACK & FIELD

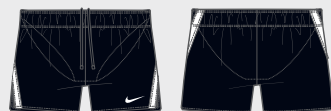
Dri-FIT lightweight woven short with side panel tape always colour blocked to white. Designed for use of the recreational runner to the elite athlete, for training or competition.

## YOUTH NIKE STOCK FAST 2 INCH SHORT

- Standard fit for a relaxed, easy feel and personalized fit.
- Inseam length: 2" / 5cm (all sizes).
- Split hem offers optimal mobility.
- Inner Brief.
- Fabric: 100% polyester.

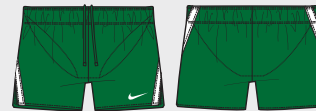
LIFE-CYCLE: 01 JANUARY 2021 - 31 DECEMBER 2023

YOUTH WSP - €10.00 / YOUTH SRP - €20.00



010 - BLACK / WHITE

**Y** NT0305-010



302 - PINE GREEN / WHITE

**Y** NT0305-302

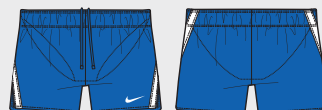
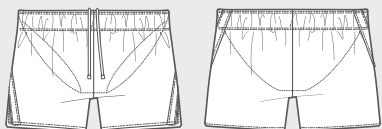


451 - OBSIDIAN / WHITE

**Y** NT0305-451

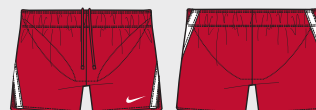
**Y** YOUTH SIZES AVAILABLE

- YOUTH SIZES: XS, S, M, L, XL



463 - ROYAL BLUE / WHITE

**Y** NT0305-463



657 - UNIVERSITY RED / WHITE

**Y** NT0305-657

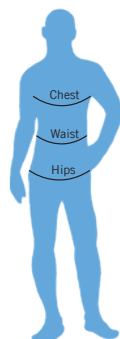


# SIZE CHARTS

## APPAREL

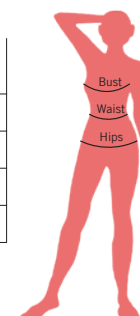
### Men's (metric)

Size (cm)	Chest	Waist	Hip	Inseam		
				Regular	Short	Long
S	88-96	73-81	88-96	82-5	77-5	87-5
M	96-104	81-89	96-104	83	78	88
L	104-112	89-97	104-112	83-5	78-5	88-5
XL	112-124	97-109	112-120	84	79	89
XXL	124-136	109-121	120-128	84-5	79-5	89-5
XXXL	136-148	121-133	128-136	85	80	90



### Women's (metric)

Size (cm)	Bust	Waist	Hip	Inseam		
				Regular	Short	Long
S	83-90	67-74	91-98	79-5	74-5	84-5
M	90-97	74-81	98-105	80	75	85
L	97-104	81-88	105-112	80	75	85
XL	104-114	88-98	112-120	80.5	75.5	85.5



### Youth (metric)

Size (cm)	Chest	Waist	Hip	EMEA Height
XS	64.5-66	59.5-61.5	68.5-71	122-128
S	66-69	61.5-65	71-74.5	128-137
M	69-75	65-69	74.5-79.5	137-147
L	75-81.5	69-72.5	79.5-84.5	147-158
XL	81.5-88.5	72.5-75.5	84.5-89.5	158-170



